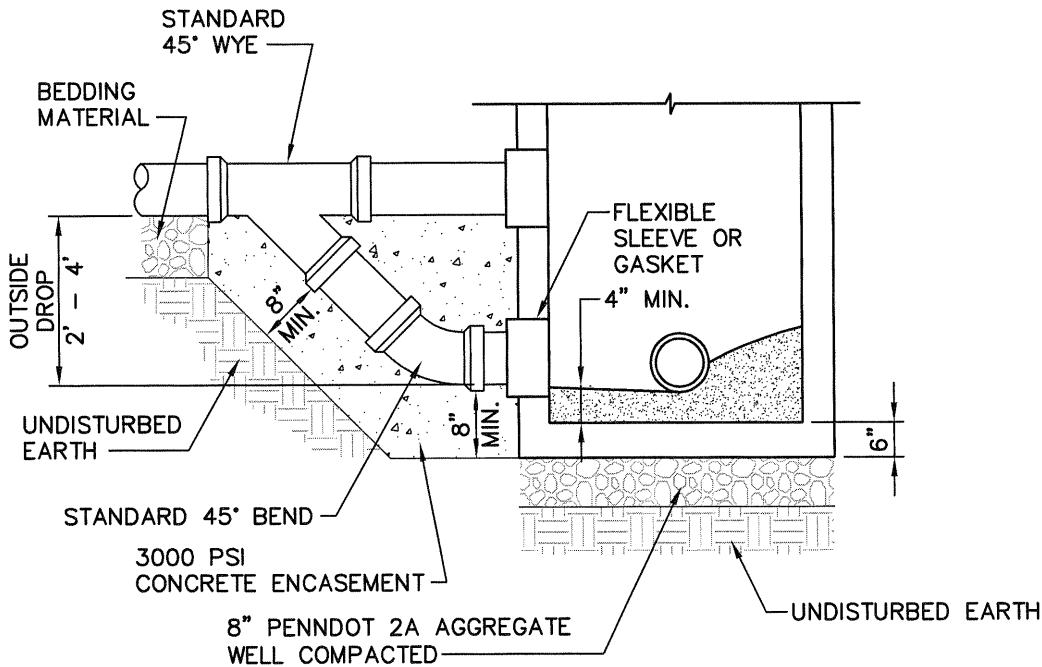


**NOTES:**

1. CONTRACTOR TO VERIFY DIFFERENCE IN ELEVATION BETWEEN INCOMING SEWER AND MANHOLE INVERT TO CONSTRUCT DROP CONNECTION IN ACCORDANCE WITH THE DETAILS SHOWN.
2. PROVIDE TEE FITTING IN LIEU OF WYE FITTING WHERE DEEMED SUITABLE FOR OUTSIDE DROP CONNECTION (BETWEEN 2'-4') AS APPROVED BY THE AUTHORITY.



**SANITARY SEWER DROP MANHOLE**

NOT TO SCALE

File name: P:\0037\003755\_0426\CS3\Standard Details\MH-DROP.dwg Layout1 Oct 11, 2011-4:09pm sheet



369 East Park Drive  
Harrisburg, PA 17111  
(717) 564-1121  
Fax (717) 564-1158  
hr@hr-inc.com  
www.hr-inc.com

**SCOTT TOWNSHIP AUTHORITY  
STANDARD DETAILS**

COLUMBIA COUNTY

PENNSYLVANIA

PROJ. MGR. - JIM
DESIGN- WGR
CADD- RSF
CHECKED-
SCALE- N.T.S.
DATE- OCT. 2011

DETAIL NO.
<b>D3</b>
SHEET NO.
<b>1 OF 1</b>
PROJECT 005755.0426